

Features that work for you

VeinViewer VISION2



MaxReach

Vision2 Imaging Unit

One hand maneuverability allows for rapid, hands-free Eyes On Patient set-up. HD and Df² projection technology provides a clear and accurate view of superficial vein patterns in real time. Fully loaded with our ASSESS™ Plus imaging suite giving you total control and customization.

Flexible Wrist Joint

Allows a 360° movement for

- Rapid and easy focusing
- Imaging any patient condition
- Meeting any IV placement need

IV Supply Basket

Provides easy, on-the-go access to venipuncture supplies for a complete procedure.

MaxReach Arm

Allows for a fast head-to-toe assessment by a standard patient bed with easy one hand positioning, and without having to move the device.

Fast Swap Flexible Power

Powered by AC or Fast Swap Battery that charges while in use so you never have a “dead device.” Batteries are compatible with Vision2 and VeinViewer Flex for system-wide optimization.

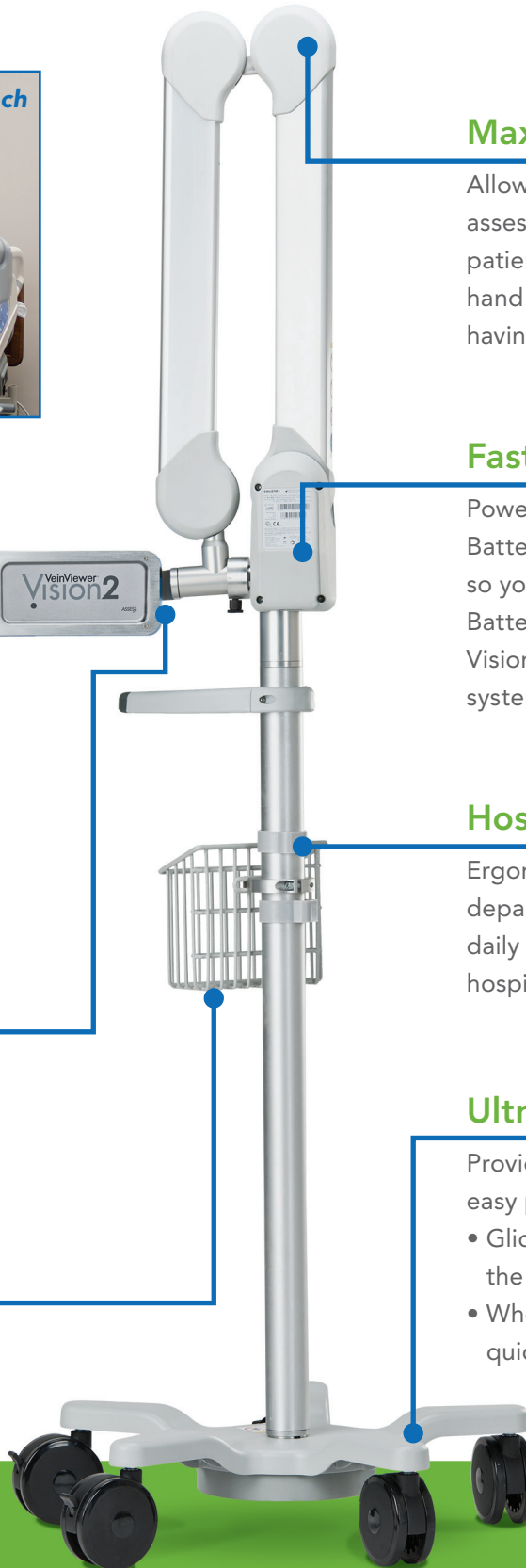
Hospital Grade Durability

Ergonomically designed to meet all departmental demands and withstand daily routines of even the busiest hospital settings.

Ultra-low Profile Base

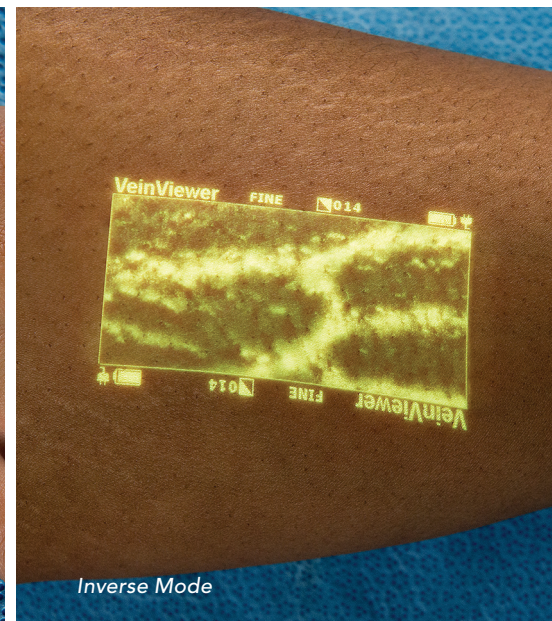
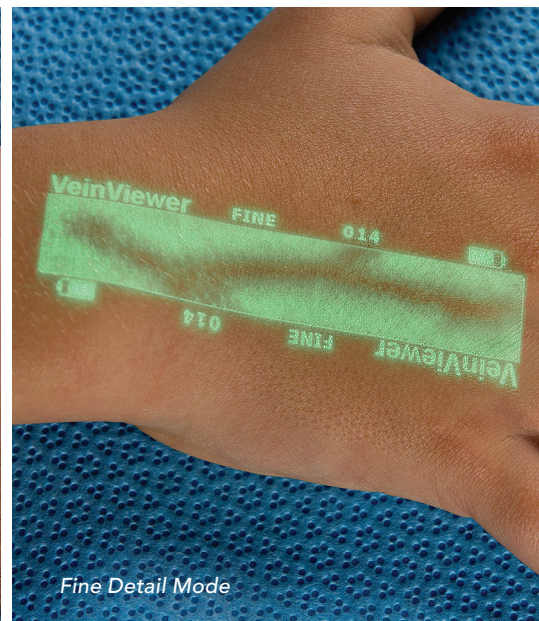
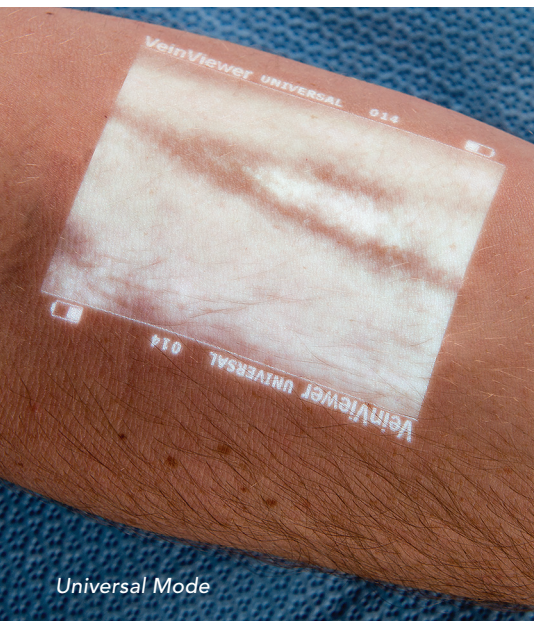
Provides a sound foundation for easy placement under the bed.

- Glides effortlessly throughout the hospital
- Wheel locks are easy to see for quick lock and release



VeinViewer® Vision2 offers the latest advances in superior vascular imaging.

Our revolutionary HD technologies provide benefits to patient care that no other imaging device can match. MaxDepth allows a view of peripheral veins up to 10mm deep and blood patterns up to 15mm beneath the surface of the skin. Vein illumination with TrueView gives you the most accurate vein width image in the industry. These features, combined with Df², Digital full field, give you the tools needed to simplify IV procedures and improve overall patient experiences.



ASSESS™ Plus Imaging Suite

See veins like never before with ASSESS Plus, the visualization software only available through VeinViewer products. The customizable modes let you choose the best view for each patient; giving you more control to ensure a better assessment for every PIV procedure.

ASSESS™ plus

- **Universal** - useful for all patients
- **Fine Detail** - critical for seeing small veins in pediatric or sclerotherapy patients
- **Inverse** - reverses the color of the veins within the image field for further image customization
- **Resize** - choose 1 of 3 window sizes, a great feature for pediatric patients
- **MaxBright** - brightest vein illumination image, needed for varying lighting conditions
- **Image Capture** - HIPAA compliant, takes up to 200 static .PNG images of the blood pattern for export to EMR documentation
- **TriColor** - allows clinician to customize image color (green, yellow, white) to adjust for patient skin tone and personal preference.

Data on file.

Your skills. Our technology. Better patient outcomes.

info@veinviewer.com

www.veinviewer.com

1-877-SEE-VEIN (1-877-733-8346) TOLL-FREE