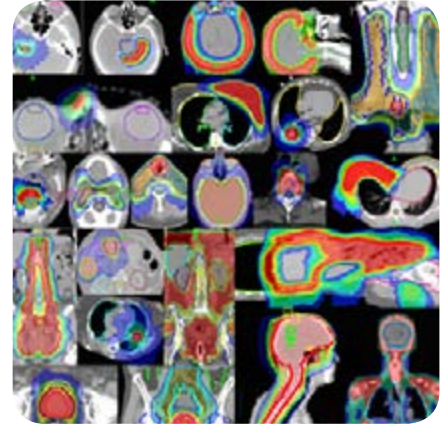
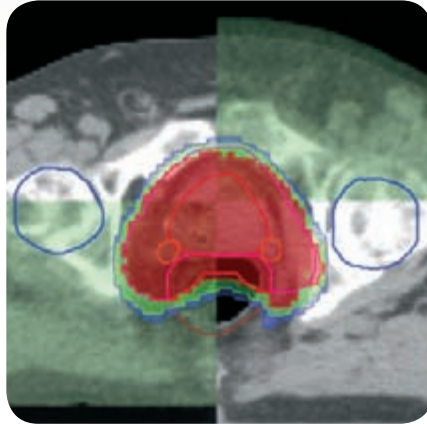
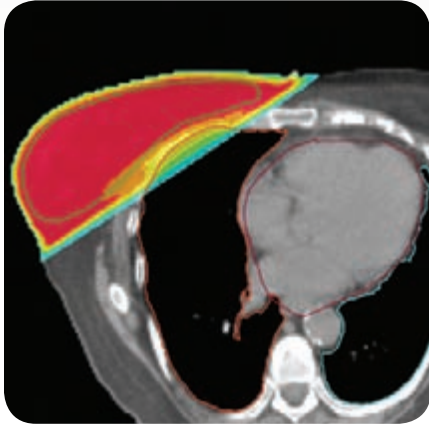


TomoTherapy[®] Hi·Art[®] Treatment System

Extending the power of the platform



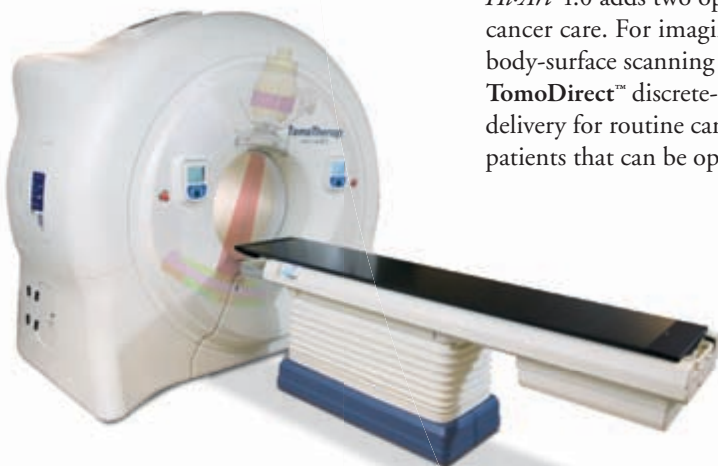
The TomoTherapy[®] Hi·Art[®] treatment system has changed the way clinicians see and treat cancer:

- integrated CTRue™ imaging makes daily image guidance a reality;
- a patented binary multi-leaf collimator (MLC) enables unprecedented dose control; and
- helical delivery offers a simple way to treat complex targets, while minimizing dose to surrounding structures.

Recent platform advances such as StatRT™ software and the High Performance Couch have enhanced system workflow, accuracy and throughput. With version 4.0 of the *Hi·Art* system, we build upon this momentum, offering new ways for more patients to benefit from this next-generation technology, now.

More treatment options. More patient treatments.

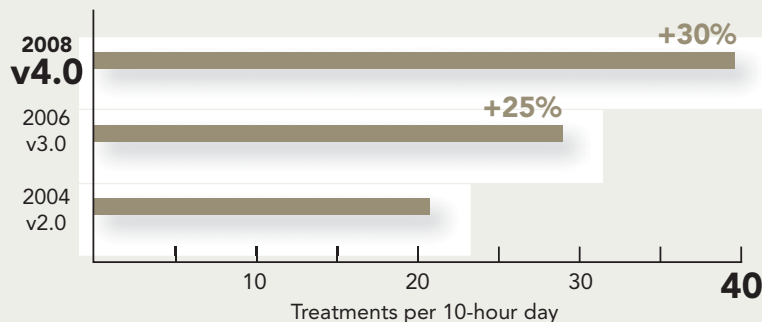
Hi·Art 4.0 adds two options to further enhance the efficiency and quality of advanced cancer care. For imaging, we have expanded technologies to offer real-time 3D body-surface scanning for streamlined patient set-up. And, for treatment, the all-new **TomoDirect™** discrete-angle delivery mode provides an alternative to TomoHelical™ delivery for routine cancer cases. Combined, the technologies expand the range of patients that can be optimally treated on the *Hi·Art* system. See back for details.



TomoTherapy[®] Hi·Art[®] Treatment System

Extending the power of the platform

Hi·Art treatment system throughput evolution



Hardware and software releases improve system usability, functionality and throughput

Next-generation technology, now

- One system, two distinct delivery modes: *TomoHelical* and *TomoDirect*
- Patient-specific therapeutic needs decide treatment modality
- Tumor type and location determine use of imaging technologies
- Continuous couch motion eliminates need for beam matching, for even the longest treatment volumes
- Consistent process for all cases builds clinical confidence, improves throughput

Hi·Art treatment system case distribution

Typical Case Mix	TomoHelical™ + CTrue™	TomoHelical™ + surface scan	TomoDirect™ + CTrue™	TomoDirect™ + surface scan
Breast 19%	●	●	●	⊙
Prostate 19%	⊙		●	
Lung 14%	●		⊙	
Bone Mets 10%	●	●	●	⊙
Head & Neck 9%	⊙	●		
Colon & Rectum 7%	⊙		●	
Brain Mets 7%	●	⊙	●	●
Brain 5%	⊙	●	●	●
Lymphoma 4%	●	●	⊙	
Skin 3%	●	⊙		
Soft Tissue Mets 2%	⊙	●	●	●
v4.0 - More imaging/treatment options for every case				

Before v4.0
One imaging/
treatment option
⊙ Probable modality for majority of cases
● Potential option depending on case

Probable and potential distribution of standard case mix across Hi·Art 4.0 imaging and treatment modalities

©2008 TomoTherapy Incorporated. All rights reserved.
The following words and logos used herein or in italicized or stylized text are trademarks or registered trademarks of TomoTherapy Incorporated in the United States and other countries: TomoTherapy; CTrue; Hi·Art; TomoHelical; and TomoDirect. M-GEN-018-0908